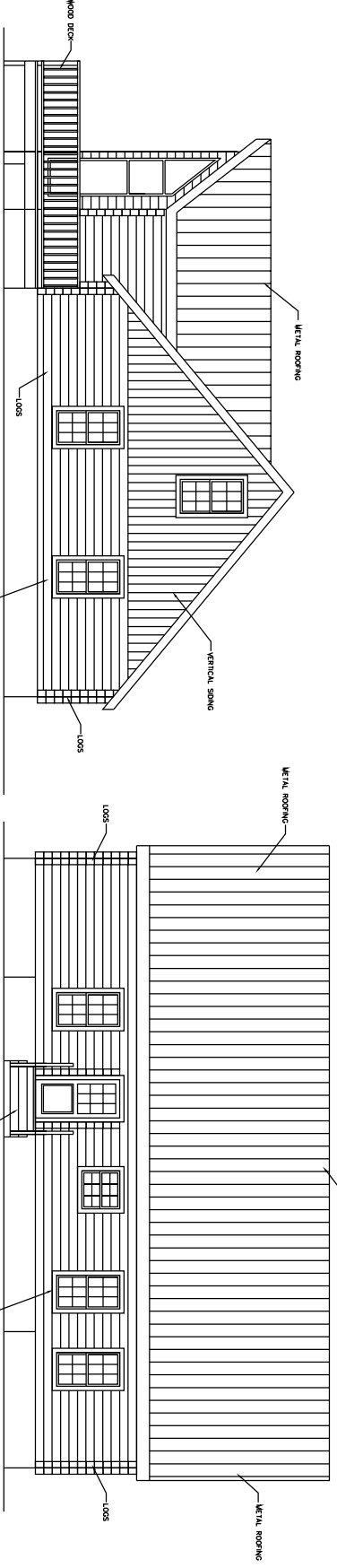


LEFT SIDE ELEVATION
SCALE: 1/4" = 1'-0"

FRONT ELEVATION
SCALE: 1/4" = 1'-0"



RIGHT SIDE ELEVATION
SCALE: 1/4" = 1'-0"

REAR ELEVATION
SCALE: 1/4" = 1'-0"

REVISIONS	BY



DATE	
DESIGNED BY	
CHECKED BY	
SCALE	
PROJECT NO.	